

# Quality Equipment

G.E. BAKER (UK) LTD



***Feed Handling Systems***

# Plastic Pig Hoppers

## With Dividers



Trough Construction



Feed Flow Adjustor

## With Separators (complies with Freedom Foods)



Trough Construction



Feed Flow Adjustor

- For meal or pellet feed.
- Stainless steel fixtures and fittings.
- Bolted construction for added strength.
- Feed flow adjustment as standard.
- Designed to minimise feed wastage.
- Easy to clean.
- Quick and easy access to feed.
- Recommendation - up to 10 pigs per feed space.
- Double-sided hoppers also available on request.

## Weaner Feeders: For pigs 7-45kg, with a 8" (200mm) wide feed space

Spaces	Material Thickness	Length mm (inches)	Height mm (inches)	Depth mm (inches)	Capacity (kg)
2 Space	10mm	415 (16")	740 (29")	310 (12")	32
3 Space	10mm	615 (24")	740 (29")	310 (12")	48
4 Space	10mm	815 (32")	740 (29")	310 (12")	64
5 Space	10mm	1015 (40")	740 (29")	310 (12")	80
6 Space	10mm	1215 (48")	740 (29")	310 (12")	96
7 Space	10mm	1415 (56")	740 (29")	310 (12")	112

## Finisher Feeders: For pigs 30-125kg, with a 12" (300mm) wide feed space

Spaces	Material Thickness	Length mm (inches)	Height mm (inches)	Depth mm (inches)	Capacity (kg)
1 Space	12mm	315 (12")	990 (39")	390 (15")	41
2 Space	12mm	615 (24")	990 (39")	390 (15")	84
3 Space	12mm	915 (32")	990 (39")	390 (15")	127
4 Space	12mm	1205 (47")	990 (39")	390 (15")	170
5 Space	12mm	1515 (60")	990 (39")	390 (15")	215
6 Space	12mm	1800 (72")	990 (39")	390 (15")	260



## Gap Feeders - Meal or Pellet Feed

- Fixed gap of 30mm.
- No feed adjustor.
- Made from 10mm polyethylene.
- For dimensions and capacity, please see table on previous page.



## Gilt and Sow Dry Feeder

- For meal or pellet.
- Feed flow adjustor as standard.
- Made from 12mm polyethylene.
- Sow feeders - cut away sides for sow's ears.
- Bolted construction for added strength.



Feed Flow Adjustor



Feed Flow Adjustor

## Gilt and Sow Wet/Dry Feeder

- Ad libitum feeding with dry feed of pregnant sows or gilts.
- Drinking nipple in a trough.
- Made of 12mm polypropylene.
- Stainless steel trough.
- Feed flow adjustor as standard.
- Cut away sides for sow's ears.

Part No	Size	Length mm (inches)	Height mm (inches)	Depth mm (inches)	Capacity (kg/l)
FEEDAP1S	Sow single	350 (14")	990 (39")	350 (14")	43
FEEDAP2S	A. Sow Twin Space	700 (28")	990 (39")	350 (14")	86
FEEDAPM1S	B. Sow Wet/Dry	350 (14")	990 (39")	350 (14")	43

# Plastic Pig Hoppers



Feed Flow Adjustor

## Wet/Dry Feeders

- Made of 12mm polypropylene.
- Drinker nipple in each feed space.
- Full separator between feed spaces.
- Stainless steel trough.
- Feed flow adjustor as standard.
- Double-sided available on request.

Part No	Size	Material Thickness	Length mm (inches)	Height mm (inches)	Depth mm (inches)	Capacity (kg)
APM1T	Single	12mm	350 (14")	990 (39")	350 (15")	42
APM2T	Twin	12mm	680 (27")	990 (39")	350 (15")	87
APM3T	Triple	12mm	1040 (41")	990 (39")	350 (15")	132
APM4T	Four	12mm	1380 (54")	990 (39")	350 (15")	176



Feed Flow Adjustor

## Piglet Feeders for Farrowing Pens

- Made of 5mm polypropylene.
- Designed to minimise feed wastage.
- Easy to clean.
- Feed flow adjustment.
- Easier transition to creep feed.

Part No	Size	Material Thickness	Length mm (inches)	Height mm (inches)	Depth mm (inches)	Capacity (kg)
FEEDAP2P	2 Space	5mm	310 (12")	430 (16")	207 (8")	42
FEEDAP3P	3 Space	5mm	460 (18")	430 (16")	207 (8")	87
PAN01	Feed Pan	10" diameter				2 litre

# Pig Hoppers



## Double Sided Stainless Steel Feeder

- For pigs from 7 - 125kg
- Shelf feeding with drinker in each feed space
- Precise feed flow regulation system for different types of feed
- Trough shape prevents feed wastage
- Each feeding place separated with steel divider for less stress among animals
- Made of 304 stainless steel

Part No	Feed spaces each side	Length mm (inches)	Height mm (inches)	Depth mm (inches)	Capacity (kg)
FEEDAP2TS/S	2 space	725 (29)	790 (31)	510 (20)	75
FEEDAP3TS/S	3 space	1186 (47)	790 (31)	510 (20)	125
FEEDAP4TS/S	4 space	1498 (59)	790 (31)	510 (20)	155



## Domino Star Feeders

- Strong materials, PE plastics and stainless steel.
- No sharp edges that can harm the animals.
- Easy to clean.
- Multiple feed amount settings.
- High trough edge minimising feed waste.

Part No	Weaner	Width mm	Height mm	Depth mm	Trough Edge mm	Capacity (kg)	No of pigs 7 - 45kg
STAR-KF	K-Flex	440	1180	430	100	56	50
STAR-KFD	K-Flex double	1040	1410	385	100	165	60

Part No	Finisher	Width mm	Height mm	Depth mm	Trough Edge mm	Capacity (kg)	No of pigs 25kg - finish
STAR-SF	S-Flex	580	1180	560	130	56	40
STAR-SFD	S-Flex double	1040	1410	510	140	165	60

*We have a feeder for every occasion, call us for advice!*

# Transition & Sprintomat Feeders



## Transition Feeder

The Transition Feeder provides the best solution for successfully weaning those small piglets found in every weaning batch.

This feeder mixes feed and water into a very palatable gruel at regular intervals – little and often, exactly as mother feeds. The mixing is done at the time of feeding and at the place of feeding – in the trough. This means the gruel is always fresh!

- This results in a higher feed intake, resulting in better post-weaning growth. The post-weaning check is greatly reduced, if not eliminated, making weaning much easier.
- Feeding times and water can be adjusted according to feed type, number and age of piglets.
- For early weaning of surplus piglets from highly-prolific sows, the warm water version provides warm gruel, ensuring a quick uptake by these young piglets.
- Suitable for up to 45 piglets post weaning (18-21 days old) or 25 early-weaned piglets (3-14 days old).



## Sprintomat Feeder

What the Transition Feeder offers to the smallest piglets, the Sprintomat provides for all pigs at weaning – a freshly-mixed gruel at regular intervals to stimulate early feed intake after weaning.

The Sprintomat distributes both feed and water at feeding. The ratio can be adjusted to ensure the best feed consistency.

Feeding is regulated automatically to link with the pigs' biorhythms to tie-in with peak feeding times and night-time habits.

- Wastage – and therefore freshness – is controlled by a contactless sensor which prevents a build-up of feed.
- This feeder helps to get all pigs feeding without delay. The Sprintomat method ensures that water intake is high after weaning, preventing the pigs becoming dehydrated, thus reducing post-weaning stress.
- The Sprintomat is designed to be easy to use, maintain and clean.
- Suitable for up to 45 pigs from weaning to 35 kg.

# Steel Hoppers & Feed Troughs



We manufacture Galvanised Steel Hoppers to individual requirement.

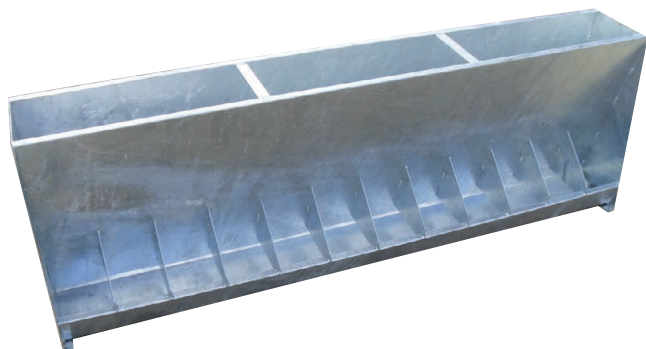
The hoppers range from small weaner hoppers, step-up hoppers, growers and finisher hoppers to large outdoor hoppers for finishers and sows.

The outdoor hoppers are available with angles for sleepers and lids as well as flaps above the feeding spaces to make the hoppers bird proof.

The feeders are manufactured in different lengths of up to 8ft.

## Steel troughs for Individual Feeders and Farrowing Crates

- Many different designs.
- Standard designs and bespoke designs.
- Galvanised or Stainless steel.
- Single or split compartment for food and water.



*Replacement Polytrough*

**Need an odd sized trough? If we haven't got it – we will make it!**

# Wet Feeding Troughs



Wet feeding troughs for liquid pipe line feeding systems are available with the following features

- Stainless steel.
- For different weights and ages weaner trough, finisher troughs and farrowing troughs.
- Single sided or double sided.
- Ad lib troughs or with dividers.

*Please contact us for your specific requirement or design.*



# Feed Barrows



Two main types of barrow are manufactured in house by Quality Equipment: Standard and Danish Style.

## Standard - Part No BARROWG1

Our standard barrow measures 4'6" x 26" wide x 20" deep and is supplied with:

- Three wheels.
- Swivel front wheel - solid or pneumatic.
- Pneumatic tyres as standard.
- Capacity for up to 200kg feed.
- Galvanised finish for greater longevity.

## Danish Style - Part No BARROWG2

Our Danish Style barrow measures 3'6" x 22" wide x 19" deep and is supplied with:

- Four wheels with solid tyres.
- Two swivel wheels.
- Handles front and back.
- Capacity for up to 125kg feed.
- Galvanised finish for greater longevity.

*If you need barrows built to your own specific requirements we can make and supply them.*

## Weaner Trolley

This bespoke product has been designed to help reduce time and strain on the farm.

The specification of the trolley:

- 700mm wide x 1150mm long (standard trolley).
- Two fixed and two swivel wheels to help with manoeuvrability.
- Hinged end door to release weaners from trolley without extra strain or handling.
- Plastic surrounds – non-corrosive and easy to clean.
- Galvanised frame.



# Tote Bins

*We are able to provide a variety of additional features, as illustrated. Tote bin stands are available to suit feed barrow or auger discharge.*

**Our standard tote bin with optional extras**

Quality Equipment makes a range of standard-sized tote bins at its manufacturing headquarters in Suffolk. These are designed for easy transportation by fork lift. They are provided with a hinged hatch at the top for filling and a slide outlet at the base.

**Tote bins are:**

- Constructed in 14 swg steel.
- Available in 1, 1.5 and 2 tonne capacities.
- Suitable for meal or pellets.
- Supplied with a painted finish.



*Filler and exhaust pipes*

*Sight glass*

*Bagging-off shute*

*Tote bin stand (height to suit feed barrow or auger)*



Roof can be fixed or designed for a tarpaulin cover.

# Feed Conveyors



## Centreless Augers

Centreless augers are an ideal and economical way to transport feed to feeders, hoppers and dispensers in houses with long, straight runs of pens.

The auger can be driven by single or 3-phase drive units. Feeding can be started manually or via timed controller. Level or feed sensors assist in controlling feeding and feed quantities.

A typical feed line has multiple feed outlets with telescopic down pipes. These feed outlets can be shut or opened individually as required.

The augers are available in 55mm, 75mm and 90mm diameter.



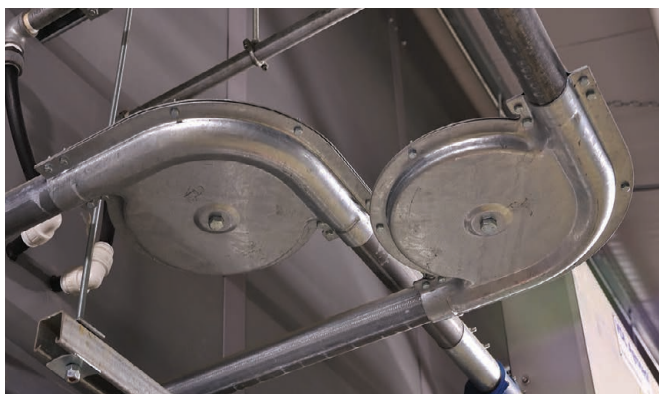
## Chain and Flight Conveyors

Chain and flight conveyors provide a hardwearing robust method of conveying feed where complex routes are required to include multiple direction changes and even vertical lifts.

A system comprises of a drive unit which houses a drive and tensioning wheel and control sensors. The feed is then carried around the circuit in the transportation tube to the individual feed outlets.

The system can be powered by a single or 3-phase motor. The circuits are designed around the specific required layout.

The transportation tubes are available in 48mm and 60mm diameter depending on the application.



*Quality Equipment has skilled and experienced fitters to install new as well as maintain and repair old feed conveying systems.*



The wide range of smooth walled feed bins provide excellent choice of feed storage solutions for capacities of up to 40 tonnes. The bins are available in galvanised finish or plastic coated galvanised steel, all with a galvanised support structure. they are designed to provide excellent mass free flow for pelleted product, wholegrain or meal, to fill a conveyor system, bags or barrow.

*Contact us today to find out how Quality Equipment offers complete flexibility to help make your life easier.*

Quality Equipment - G. E. Baker (UK) Ltd, Heath Road, Woolpit, Bury St Edmunds, Suffolk, IP30 9RN  
info@quality-equipment.co.uk www.quality-equipment.co.uk  
Tel: 01359 240529 Fax: 01359 242086