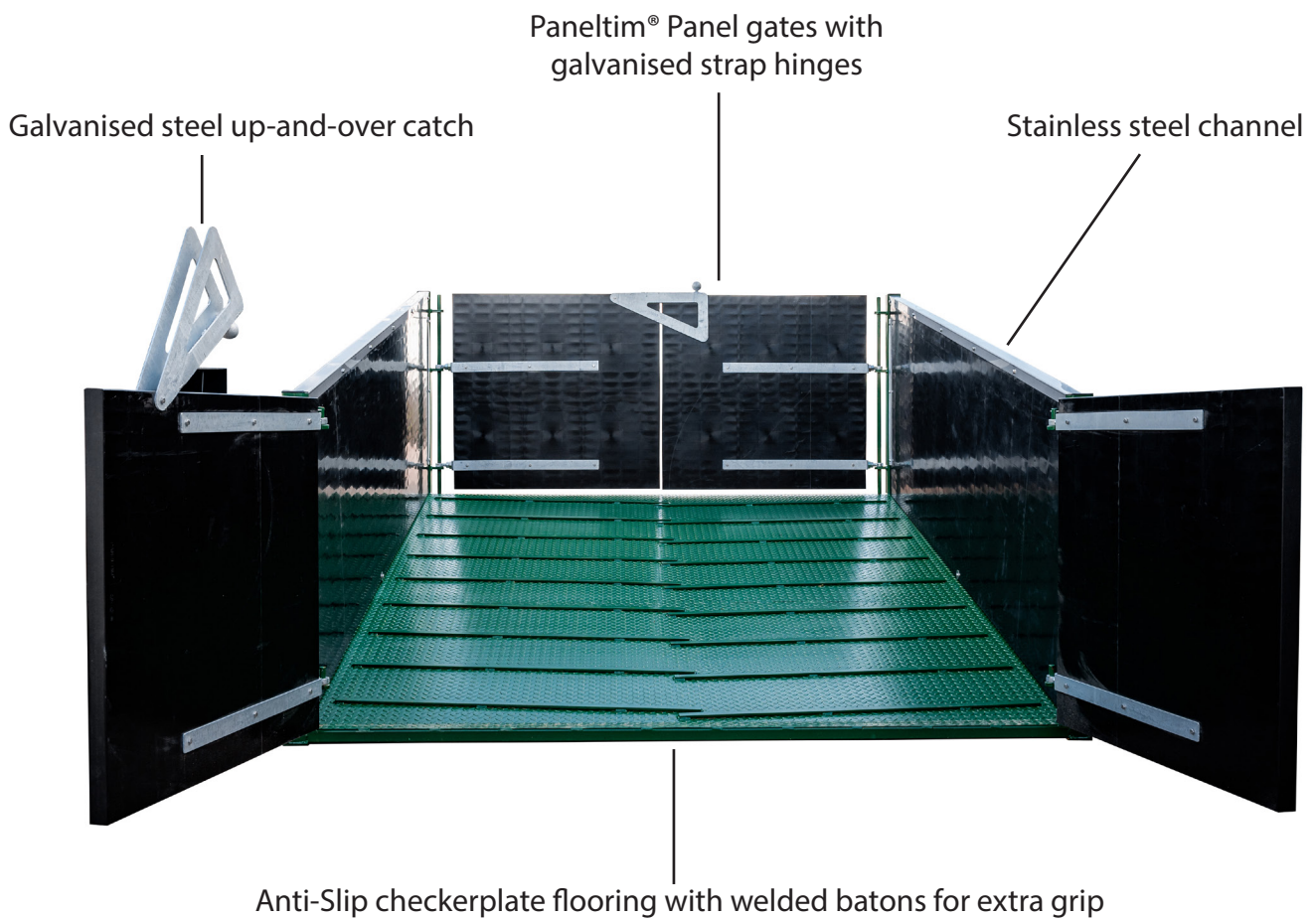
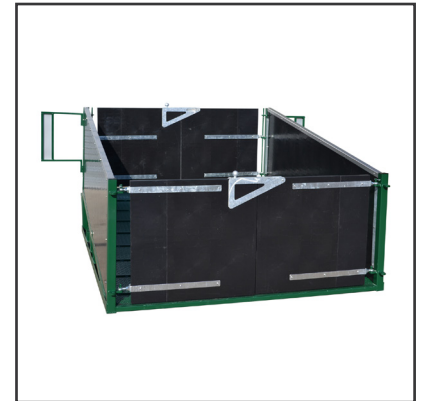
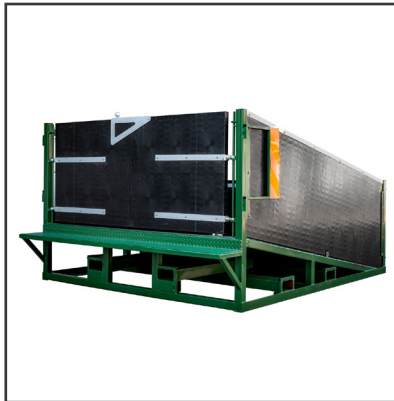




## LOAD001 LOADING RAMP

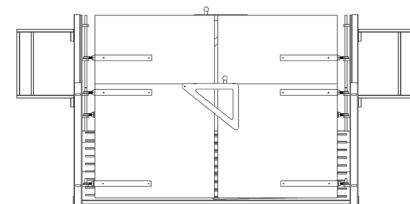
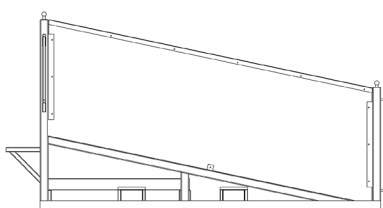
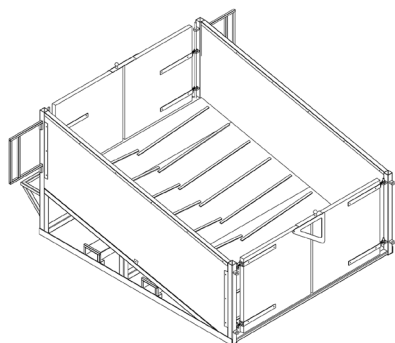
The loading ramp is built for strength and practicality, with an 11° slope designed for safe and easy movement of pigs between pens and vehicles, making it a dependable choice for livestock handling. It also has eyelets welded on for use with hurdles.

## LOADING RAMP





## LOADING RAMP



### PRODUCT SPECIFICATION

Frame Material	Galvanised Steel
Undercoat finish	Red Oxide
Finish Coating	Semi-gloss paint
Dimensions(mm)	2500W x 3000L x 1615H
Tailboard step height	490mm off the ground
Flooring	Checkerplate Anti-Slip
Gate Material	Paneltim® Panels
Slope Angle	11° degrees or 20% incline

### PRODUCT FEATURES

- **Swing-out reverse guides** – Help drivers back up with confidence.
- **Multiple telehandler lifting points** – Designed for easy movement around the farm or site.
- **Smooth, easy-clean Paneltim® surface** – Hygienic, non-porous and quick to wash down.
- **Integrated fixed step** – Allows the lorry tailgate to sit flush and secure during loading.
- **Dual-side gate access** – Opens from both sides for flexible loading and better stock flow.
- **Reinforced with stainless steel channels** – Ensures rigidity, even under heavy use.
- **Gentle 11° incline** – Designed for safe and stress-free movement.
- **Non-slip flooring** – Improves grip and reduces the chance of slips or falls.

*\* This product qualifies under the FETF grant criteria; however, please note that we are not involved in the application or approval process, and the final decision on funding grants rests solely with DEFRA\**

